

Assembly Instruction Sheet #IS-1070P30-13

For Style 1070P30-13

Tools Required: Flathead screwdriver, Phillips screwdriver, pliers, wire cutters, wire strippers, electrical tape, safety glasses.

Light Source: (13) G9 40W Maximum(Not Include).

Estimated Assembly Time: 20-30 minutes

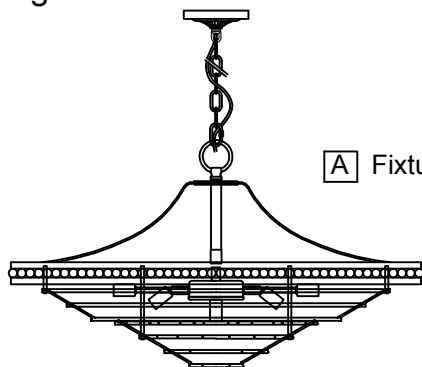
Preparation: Identify and inspect all parts before beginning installation. Check package content list and diagrams below to be sure all parts are present. If any parts are missing or damaged, do not attempt to assemble, install, or operate the fixture. Contact customer service for replacement parts.

⚠ Warnings and Cautions

Turn off electricity at circuit breaker or main fuse box before installation. Consult a licensed electrician if in doubt. These instructions are provided for your safety. It is very important you read them completely before installing the fixture. We strongly recommend that a licensed, professional electrician perform the installation.

Disconnect fixture from power source before replacing bulbs. Make sure bulbs are given sufficient time to cool before removal.

Package Contents



[A] Fixture Body x1

⌀12mm*1PCS

⌀40mm*1PCS

[B] Crystal Ball x64

⌀12mm*2PCS

⌀40mm*1PCS

[C] Crystal Ball x138

⌀12mm*3PCS

⌀40mm*1PCS

[D] Crystal Ball x49

Hardware Contents

PART	DESCRIPTION	QUANTITY
AA	Canopy Lock Ring	1pcs
BB	Wire nut	2pcs
CC	Canopy Chain Loop	1pcs
DD	Crossbar	1pcs
EE	Outlet Box Screw	2pcs

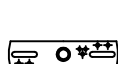
AA

BB

CC

DD

EE



STEP 1— Install the Canopy Chain Loop and Nipple

- Thread the nipple into the crossbar . Thread the lock washer and the hex nut onto top end of the nipple. Do not tighten at this moment.
- Attach the crossbar to the outlet box and secure with outlet box screws (not included). Hand tighten until snug. Thread the canopy chain loop onto the end of the nipple and hand tighten until snug. Place the ceiling canopy over the canopy chain loop against the ceiling to determine the correct position of thenipple.
- Thread the canopy lock ring onto the canopy chain loop.Adjust the nipple to allow the ceiling canopy to rest against the ceiling when held in place by the canopy lock ring.
- Remove the canopy lock ring from the canopy chain loop and remove the ceiling canopy. Unscrew outlet box screws to remove the crossbar assembly. Tight the hex nut above the crossbar. And then reinstall the crossbar assembly to the outlet box.

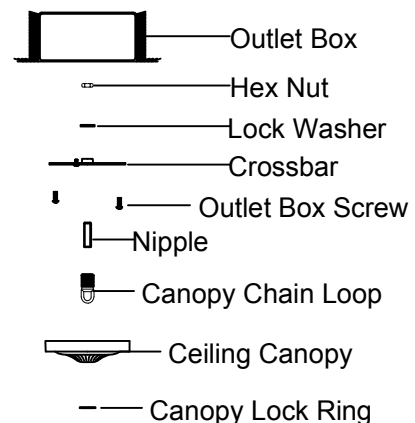


Figure 1